

Road Safety Policy

**St Michael's Catholic
Primary School
Mittagong**





Road Safety Policy for St Michael's Primary School Mittagong

Rationale/ Preamble/Belief Statement

At St Michael's Catholic Primary School, Mittagong we believe that a road safety policy provides a framework of common understanding for students, staff, parents/carers and the community who interact with the school to provide a safe environment.

Our Catholic School is founded on the person of Jesus Christ and is committed to educate in Gospel values - especially in hope, love, justice and care for others in the community.

The main intention of this policy is to ensure the health, safety and welfare of our students who travel to and from the school. We do this by assessing the risks in the road environment around our school, developing practical school management procedures and ensuring that the key road safety messages are taught to our students.

Environmental Statement

Describe relevant factors that may impact on the safety of students may include traffic flow, supervision, pedestrian density, crossings.

Aims

At St Michael's Catholic Primary School, we aim to provide a quality road safety education program (K-6) that develops attitudes, behaviours and values promoting responsible road use.

At St Michael's Catholic Primary School, we aim to have procedures and practices in place that maximise the safety of students when they arrive at school and when they leave school.

Curriculum Statement

At St Michael's, our staff will develop and implement effective, sequential road safety education programs within the K-6 PDHPE learning area. Our programs will make use of the Transport for NSW (TfNSW) Safety town and Move Ahead with Street Sense materials resource materials and address the following road safety issues for our students:

- Pedestrian safety
- Bus safety
- pedestrian safety; and
- Safety on wheels (for students who use bicycles, scooters and skateboards).

School Management Procedures

At St Michael's Catholic Primary School the staff will maximise the safety of students by:

Members of the community St Michael's Catholic Primary School will be informed via parent handbook, newsletters, electronic media and orientation activities about the importance of:

- modelling safe road user behaviour;
- parking vehicles safely outside the school and observing all parking signs;
- ensuring that children are protected whilst travelling to and from school;
- reinforcing the safety messages taught at school;
- supervising the travel of young students;
- identifying and reporting safety issues in and around the school; and
- contribute to solving road safety issues that are of concern to the school and community

Parents or carers are responsible for how their child gets to and from school. Parents and carers are asked to keep our school community safe by:

- driving and parking safely, even if it means parking further away and walking the rest of the way to school;
- being a good role model;
- never calling your child from across the road to walk unaccompanied to you; and
- using the safest place to cross the road.

Parents are asked to plan ahead by discussing the following with your children:-

- safe travel routes
- how to share the road safely
- alternative arrangements for when unexpected things happen

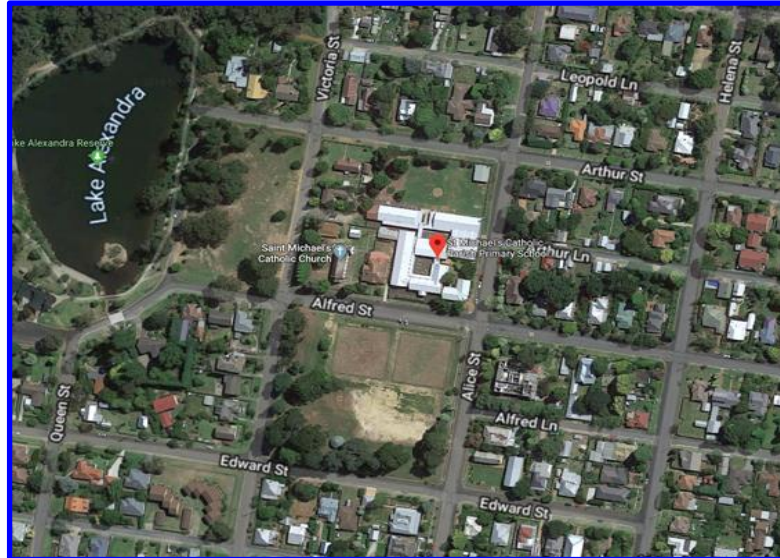
Parents must at all times park in legal places and avoid parking in bus zones, too close to street entry/exit points and follow road rules in regard school speed zone limits.

Site Map

The school is located at 51-55 Alfred Street Mittagong. As shown in the image below, access to the school is via Alfred Street and Alice Street. There is a back gate along Arthur street which is used for afternoon dismissal only.

There is sufficient street parking along all streets surrounding the school.

The main bus pick up is along Alfred Street.



There is a school speed zone limited to 40km per\hr during the hours of 8:00am - 9:30am and 2:30pm - 4:00pm directly in Alice Street. The surrounding streets are all speed zoned.

Afternoon

Dismissal

The school bell for afternoon dismissal rings at 2.50pm to end our school day:-

Catching The Bus - The children catching a bus home, line up under the COLA (Covered Outdoor Learning Area) in the correct bus line. All children know which bus they are catching home before they start catching the bus. They will be escorted by a staff member to their designated bus.

The buses collect students from Alfred Street. The following buses names and destinations include:

1. Frog - Welby
2. Horse - Bowral
3. Ladybird- Town
4. Rabbit -Joadja
5. Dog -
6. Pig -
7. Sheep - Hilltop

Children walking home - students meet near classrooms beside the boys toilets and are to be assisted safely across the roads by the teacher on duty. **At no time are parents allowed to take another person's child home, without the parent's permission or knowledge of our staff.**

Children who are being picked up – Children meet and wait on the steps outside the hall for parents. All children will be supervised by teaching staff.

There is a pickup zone on Alice Street, outside the hall for parents to park so they can quickly collect their children. **No long term parking in this area.**

Parking is also available along Alfred Street to parents to stop, park and come in to school grounds to collect child. Parents/carers are asked that they do not sit directly outside their child's classroom to wait for them, as this can be very distracting for the children. If you are exiting the school via the Alfred Street exit (in between the library and the kindergarten classroom), please be mindful, that this is the same exit used for the children catching the buses and to be particularly careful when crossing the roads. **PARENTS/CARERS ARE ASKED TO PLEASE NOT WALK BETWEEN THE BUSES TO CROSS THE ROAD.**

Parents who are late picking up children - Any students that are still waiting to be collected after 3:00pm are to be escorted to the office by staff to wait for their parents there. Parents will be contacted by school. Parents are asked to ring the school office if you are going to be delayed.

Children riding a bike – Our School Policy states that children under 10 years of age **do not** ride bicycles to or from school unless accompanied by an adult.

Students who ride to school must have read the School's bicycle policy and returned to the school the signed acknowledgement form along with a written permission note signed from the parents **before** they are allowed to ride their bike to and/from school.

[Link to St Michael's Bicycle Policy](#)

The traffic Alfred, Athur and Alice Streets is particularly high between 2.30pm – 3:00pm at the end of school. During these times there is a high volume of pedestrian activity crossing Alfred, Athur and Alice Streets.

Skateboards, ripsticks, rollerblades and scooters are not permitted at St Michael's unless directed by teachers.

Alfred Street Entry

This is the main entry for school buses.

Sufficient street parking is available.

Entry point is in between the library and the Kindergarten classroom.

Alice Street Entry

Currently this entry point has a student pickup/drop off zone.

Some street parking is available.

Entry point is via the gate in between the Year 6 classroom and hall.

Deliveries to school

Any deliveries to school are made via the school office. Sufficient street parking is available. Access to the school office is on Alice Street (near the corner of Alice Street and Alfred Street)

Visitors to school

All visitors to the school (including parents/volunteers) **must** attend via the school office and 'sign in' the Visitors' register (ipad).

All persons visiting the school as either a volunteer with children or for child-related work must:-

- Be a suitable person to work or volunteer for child-related work and satisfied all CEO requirements (see below)
(Any person barred in NSW from working with children is not able to volunteer)
- Treat students with respect
- Provide the school with their working with
- Always act prudently and maintain appropriate personal boundaries
- Cooperate with supervising staff at all times

The Working With Children Check (WWCC) is a requirement for anyone who works or volunteers in child-related work in NSW. It involves a National Police Check (criminal history record check) and a review of reportable workplace misconduct.

[Link to Catholic Education Office - Working With Children](#)

For more information about safe travel to and from school visit:

[Road Safety Education - Car Travel](#)

[Road Safety Education - Bus Travel](#)

[Road Safety Education -Walking](#)

[Road Safety Education - Riding](#)

[Keeping our Kids Safe Around Schools](#)

Discretionary basis

The Principal or designated executive staff have the right of discretion to make provision for departure from the policy or the application of amendments in the event of unforeseen and exceptional circumstances.

This policy was prepared by: St Michael's Catholic Primary School Mittagong Staff - October 2019.

Adoption date: _28/1/2020

Review date: February 2021